

Health Report

COVID-19: Implementation of the Maritime Border Order 2020

Date due to MO:	25/06/2020	Action required by:	N/A
Security level:	IN CONFIDENCE	Health Report number:	20201117
To:	Hon Chris Hipkins, Minister of Health Hon Jenny Salesa, Minister of Customs and Associate Minister of Health		
Copy to:	Hon Dr Megan Woods, Minister of Housing		

Contact for telephone discussion

Name	Position	Telephone
Maree Roberts	Deputy Director-General, System Strategy and Policy	s 9(2)(a)
Angela Hassan-Sharp	Group Manager, COVID-19 Strategy and Policy	

Action for Private Secretaries

Return the signed report to the Ministry of Health.

Date dispatched to MO:

COVID-19: Implementation of the Maritime Border Order 2020

Purpose

This Health Report provides an update on how the Ministry of Health, alongside other agencies is implementing the operational processes to enforce the COVID-19 Public Health Response (Maritime Border) Order 2020 (the Order).

Key points

1. The Order aims to protect New Zealand from further transmission of COVID-19 via the maritime border, while keeping cargo and freight imports and exports moving and growing. The Order came into force at 11.59pm on 30 June 2020.
2. The implementation of the Order is on track, with the Ministry of Health participating in a multi-agency approach to implement the Order effectively, as endorsed by Cabinet. Ministry of Health officials are involved in a number of inter-agency maritime border groups and sub-groups. These groups provide the opportunity for agencies to raise any issues that may require further discussion that could be resolved at an operational level or that might require an amendment to the Order. We will advise of these issues in due course.
3. To assist with the compliance of the Order, the Ministry of Health is implementing the following measures:
 - continuing to issue operational guidance on quarantine/isolation processes at the maritime border.
 - Engaging with PHUs to ensure they have met with Port Authorities to raise awareness of the Order, promote compliance and re-iterate the use of PPE by frontline border staff
 - contracting independent experts to develop a formal audit and compliance plan for the oversight of operations at the maritime border. A draft plan will be provided to the Ministry of Health on 10 July 2020
 - co-ordinating closely with Integrated Targeting and Operations Centre (ITOC) to monitor the approval process for ships entering New Zealand subject to the Order.

Recommendations

The Ministry recommends that you:

- | | |
|---|---------------|
| a) Note that the Ministry of Health is working with other agencies to operationalise the Public Health Response (Maritime Border) Order 2020 | Yes/No |
| b) Note that the Ministry of Health will provide further advice on issues raised by border agencies about the Order's requirements that may necessitate amendments to the Order. | Yes/No |

Robyn Shearer
Acting Director-General of Health
Ministry of Health

Hon Chris Hipkins
Minister of Health
Date:

Proactively released

Background

1. On 22 June Cabinet agreed to new maritime restrictions outlined in the COVID-19 Strengthened Maritime Border Restrictions Cabinet paper [CAB-20-SUB-0299 refers]. This resulted in the Order, which came into effect at 11.59pm on 30 June 2020. The Order restricts all foreign-flagged marine ships from coming to New Zealand (unless they fall within a tight category of exceptions), introduces new restrictions on crew at the maritime border and extends the temporary cruise ship ban.
2. The border settings are based on a 'foundational rule', which restricts all foreign-flagged marine ships from coming into New Zealand unless they fall within a tight number of categories for exception. Exceptions to the foundational rule allow for cargo ships to unload and load all cargo, fishing ships to unload catch and resupply, Defence and State ships to enter and depart New Zealand, scientific research and Antarctic ships to travel between New Zealand and Antarctica, and ships to come to New Zealand to undertake repair and/or refitting.
3. An interim period of four weeks has been proposed for the Order. Following this period, the restrictions in the Order will be refined based on inter-agency feedback and drawing on international best practice.

Cross agency meetings on implementation

4. The Ministry of Health is undertaking a multi-agency approach to implement the Order effectively, with officials meeting frequently with other border agencies. The Ministry of Health has attended the following meetings:
 - The Border Sector Working Group convened by Customs, provides an opportunity for agencies to provide updates on how each is contributing towards the implementation of the Order, particularly on compliance. On 8 July agencies discussed potential issues for consideration as part of the review of the Order in a few weeks' time.
 - A sub-group looking at options for providing welfare services to crew on board ships, convened by the Ministry of Transport. On 3 July agencies discussed the possibility of testing ship crew, which resulted in the creation of a separate sub-group, to be stood up later this week.
 - A sub-group on 8 July convened by Maritime New Zealand focused on safe working practices for stevedores. The aim of this meeting was to identify and mitigate any health and safety risks to stevedores.

Resolved/unresolved issues with the Order's requirements

5. These meetings referred to above provide the opportunity for agencies to raise any issues that require further discussion. Over the next few weeks agencies are clarifying whether these issues could be resolved at the policy or operational level or through an amendment to the Order. These include the following:
 - In compliance with the Order, most ports in New Zealand have been applying an interim alternative to shore leave by shifting shore-based welfare services to the ship. Welfare

workers have been visiting ships while wearing PPE and observing physical distancing to supply seafarers with wi-fi and delivering goods.

- Discussions are underway with agencies about the process for a person to disembark a vessel upon completing their self-isolation period onboard the ship.
- Following a request from unions to test maritime crew upon arrival at the border, the Ministry of Transport will discuss the feasibility of this process with other border agencies.

Compliance and Auditing

To provide assurance that the restrictions in the Order are enforced appropriately, the Ministry is implementing the following measures in coordination with relevant agencies:

Operational guidelines

6. The Ministry of Health is continuing to issue operational guidance on quarantine/isolation processes at the maritime border. We provide a draft copy of the guidance to be published on the Ministry of Health website shortly (refer to Appendix A).

Public Health Unit engagement with port authorities

7. The Ministry of Health has instructed PHUs to communicate directly with local port authorities to draw attention to the new restrictions and strengthened controls to be implemented under the new Order. PHUs held face-to-face meetings with port authorities this week to raise awareness of the Order, promote compliance and reiterate the use of PPE by front line border facing staff. To ensure the Order is implemented consistently at every port across New Zealand, PHUs are continuing to work closely with ports, shipping agents and other maritime stakeholders. Ongoing engagement has involved:
 - Sharing the Ministry of Health border information to shipping agents and all border staff.
 - Continuing to implement the COVID-19 maritime border testing process with local testing teams as required
 - Keeping an open dialogue with international border officials and shipping agents on the new restrictions
 - Continuing to liaise with the Ministry of Health to ensure a consistent approach is applied to border health in every region

s 9(2)(g)(i)

s 9(2)(g)(i)

- [REDACTED]
- [REDACTED]
- [REDACTED]
- [REDACTED]

Role of the Integrated Targeting and Operations Centre

10. Agencies are continuing to make use of existing mechanisms when processing the approvals for vessels to enter New Zealand. Vessels notify Customs and other agencies via the Integrated Targeting and Operations Centre (ITOC) by submitting an Advanced Notice of Arrival Notice (ANA) at least 48 hours in advance. The ANA is sent to the relevant agency, which has legislative responsibility for categories of vessels.

Key roles and accountabilities of border agencies

11. As part of the multi-agency approach, we provide a summary of the accountabilities of each border agency involved with the operationalisation of the Order:

Agency	Role
Ministry of Health (MOH)	<ul style="list-style-type: none"> Noting the decision by Cabinet to designate the Minister of Housing as the accountable Minister for quarantine and managed isolation provisions, the Director-General of Health remains responsible for any requirements that are not reflected in the COVID-19 Public Health Response (Air Border) Order 2020. These include granting some exemptions for ships to arrive in New Zealand for humanitarian purposes, or when there is a compelling need for a ship to arrive in New Zealand for the purpose of delivering the ship to a business, including for repair or refit. The Director-General also grants permission to a person to leave the ship on which they arrived for any exceptional reason (refer to section 14 (4) of the Order) Advises on correct use of PPE for port workers, maritime crew and border agencies.
Ministry of Business Innovation and Employment (MBIE)	<ul style="list-style-type: none"> Continues to process visas of foreign crew should they require entry into New Zealand. Provides advice on capacity of managed isolation facilities should they be required by crew.
New Zealand Customs Service (Customs)	<ul style="list-style-type: none"> Focuses on monitoring and enforcement measures. It has increased its security presence at the ports Engages in regular reporting on vessel movements

	<ul style="list-style-type: none"> • Works closely with the stevedores to ensure ports do not allow crew to disembark without satisfying the requirements of the Order.
Ministry of Transport (MOT)	<ul style="list-style-type: none"> • Engages with ports and unions to ensure they understand the requirements of the Order. • Convenes two sub-groups to assess options for providing welfare services to ship crew on board ships and testing of ship crew as an effective risk mitigation measure.
Maritime New Zealand (MNZ)	<ul style="list-style-type: none"> • Provides operational guidance to stakeholders on the Order, including as it relates to stevedores and shipping pilots. • Convenes two sub-groups for stevedores and crew working on foreign vessels. • Remains in contact with ports and harbourmasters about the Order's requirements.
Ministry of Primary Industries (MPI)	<ul style="list-style-type: none"> • Responsible for fumigation and other vessel bio security measures

Next Steps

- The Ministry will continue to participate in cross agency border meetings to ensure the public health measures outlined in the Order remain the primary consideration for the implementation of the Order.
- The Ministry of Health is continuing to assess the Order's requirements to ensure they remain fit for purpose and meet the policy objectives of the Order. As part of this work, officials are working closely with border agencies to identify and discuss issues that have been raised with the Order. We will provide advice on this process in due course.

Appendix One: Operational Guidance for Maritime Border

Quarantine/isolation process at the maritime border

6 July 2020 - Interim guidance only

The COVID-19 Public Health Response (Maritime Border) Order 2020 was made on 26 June 2020 to strengthen maritime border controls to further mitigate the risks from COVID-19 entering New Zealand via the maritime pathway. A copy of the order is available here: <https://www.health.govt.nz/our-work/diseases-and-conditions/covid-19-novel-coronavirus/covid-19-current-situation/covid-19-epidemic-notice-and-orders#border>

This guidance is a living document and will be updated and revised as the Order is implemented and processes are further refined. Users should check for updates on the Ministry of Health's website.¹

Please send any queries or comments to notifyenvhealth@health.govt.nz

Under the Order, all vessels are prohibited from entering New Zealand (unless exempt) and there are strict isolation or quarantine requirements for those arriving at the maritime border.

Vessels exempted from the prohibition on foreign-flagged vessels entering New Zealand

- If the vessel is in distress and/or it is necessary for the vessel to arrive in New Zealand to preserve human life.
- An Antarctic ship.²
- A cargo ship to allow the loading and unloading of cargo.
- A fishing ship, that is unloading its catch, re-provisioning or refuelling, or both; or embarking or disembarking crew.³
- A foreign State ship that has been granted diplomatic clearance by the Ministry of Foreign Affairs and Trade. This includes a warship of any other State and ships owned or operated by a foreign state that are operated for non-commercial purposes.
- A ship where there is a compelling need for the ship to arrive in New Zealand for re-provisioning and refuelling, or both; OR to deliver the ship to a business, including for the purpose of repairing or refitting the ship; AND the Director-General has granted the ship permission to arrive in New Zealand.
- A ship granted permission by the Director-General of Health (after consulting any relevant agencies) for humanitarian reasons or other compelling needs.

This advice covers the crew on all New Zealand-flagged vessels, vessels in distress, Antarctic ships, cargo and fishing vessels, and vessels entering New Zealand for re-provisioning, refuelling, or delivery to a

¹ www.health.govt.nz/our-work/diseases-and-conditions/covid-19-novel-coronavirus/covid-19-information-specific-audiences/covid-19-resources-border-sector/covid-19-maritime-sector

² Defined as a ship operated by or associated with a scientific programme or expedition of a contracting party to the Antarctic Treaty (defined in the Antarctica Act 1960).

³ The Order defines such ships as being used to catch fish or other living resources of the sea for profit or is recognised by the Director of Maritime New Zealand General as being engaged in fisheries research.

business. Crew on other classes of vessels (for example, foreign State ships) will be managed on a case by case basis.

Isolation or quarantine requirements in the Order

All persons arriving via the maritime border (with limited exceptions⁴) must adhere to the Order's quarantine or isolation requirements. This includes those arriving on small craft and pleasure craft. An exception to this rule is crew on board a vessel that are not leaving the vessel.

- People wanting to disembark the vessel must remain in quarantine or isolation on the vessel for at least 14 days after arrival.
- An exception to this requirement exists where:
 - a) The ship has been at sea for more than 28 consecutive days, **AND**
 - b) During this time no person has had contact with any other persons other than those people who were on board the ship when it most recently departed, **AND**
 - c) The Customs and Excise Act 2018 requirements for the arrival of craft and disembarkation of persons have been adhered to, **AND**
 - d) A medical officer of health or health protection officer is reasonably satisfied that no persons on board have displayed symptoms of COVID-19.
- If the person meets requirements b-d, their quarantine isolation period would be for the number of days needed to make up the 28- day period. For example, if the ship had been at sea for 25 consecutive days then they would be subject to quarantine for 3 days (25 + 3 = 28 days) If the vessel is an Antarctic ship the 14-day period is counted from the more recent of: (i) the time the ship was last in port, and (ii) the time at which the ship last took a person on board.

The 14-day period of quarantine/isolation begins when the vessel arrives in New Zealand. The definition of arriving has the same meaning as the Customs and Excise Act 2018 section 5(1). New Zealand is defined as *"...the land and waters enclosed by the outer limits of the territorial sea of New Zealand."*

Quarantine/isolation on board a vessel requires all persons on board to minimise contact with any other person to the best extent possible, in order to reduce the risk of a chain of transmission ie passing COVID-19 to other crew members. It also includes being examined or tested for COVID-19 at any time during the quarantine/isolation period. See **Scenario 1**.

Persons can only disembark the vessel in accordance with the Order. Examples of reasons to disembark are described in the supporting 'scenario' process flow charts and notes below:

- A person is unable or unwilling to remain in isolation or quarantine on the vessel (**Scenario 2**).
- To undertake an essential task related to the vessel that requires temporarily disembarking (for example, loading/unloading cargo, ship maintenance, undertaking vessel safety check, necessary ship preparations such as rigging gangways, etc) (**Scenario 3**)
- For other purposes, including emergencies, accessing urgent health services, accessing a court or tribunal, being required to disembark by a medical officer of health or health protection officer (**Scenario 3**)
- After isolation or quarantine period (on the vessel) is completed (**Scenario 4**)

⁴ New Zealand Government ships, New Zealand warships and foreign State ships are exempt from the quarantine or isolation requirements in the Order. There is also an exemption if a vessel has spent longer than 28 days at sea, or if the Director-General of Health has authorised an exemption for an exceptional reason.

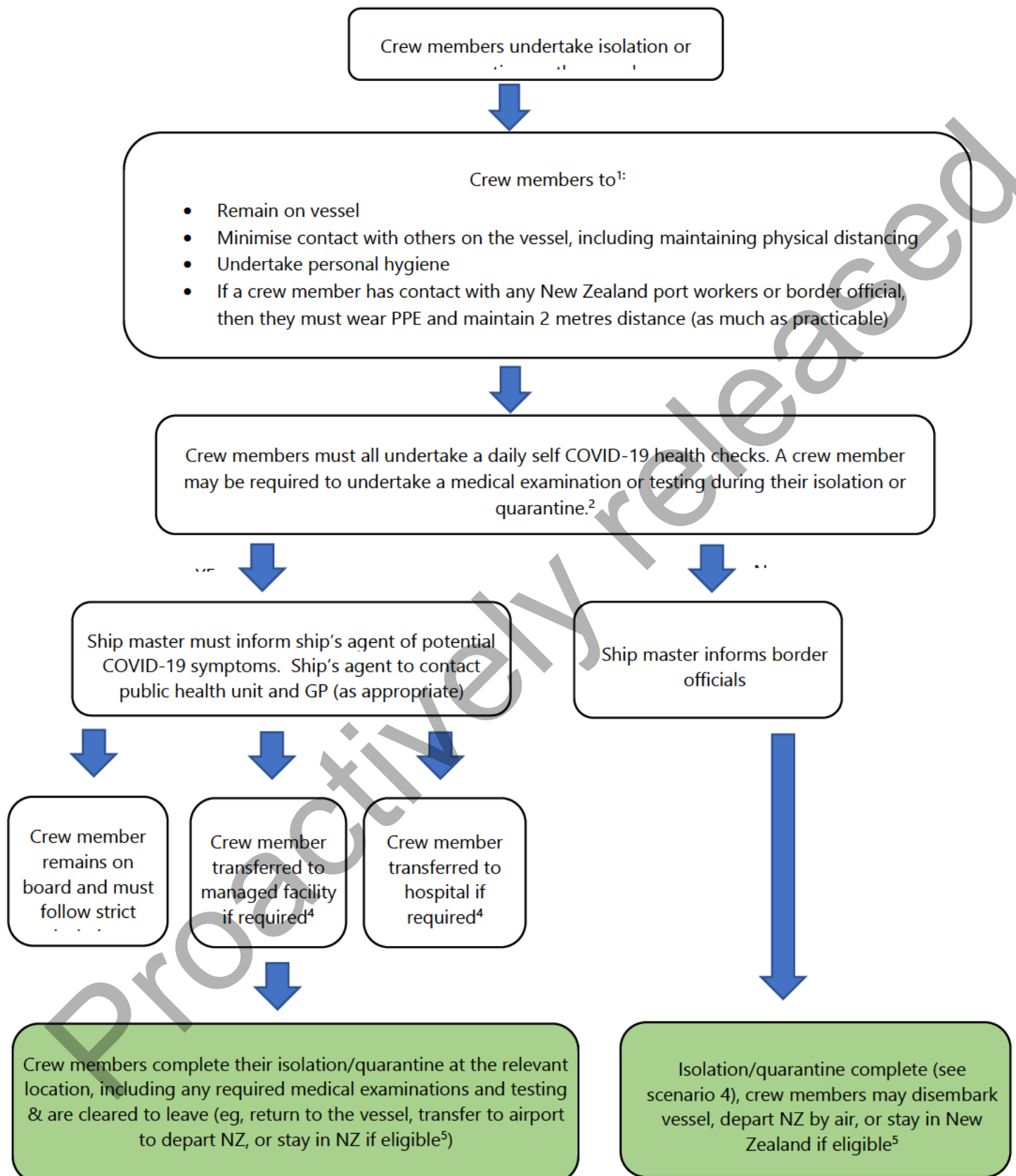
- To travel to an international airport to leave New Zealand (for example, as part of a crew change) (see **Scenarios 5A and 5B**)

Information has also been provided for:

- Crew arriving by air into New Zealand to join a vessel at a New Zealand port (**Scenario 6**)

Proactively released

Scenario 1: Isolating or in quarantine on the vessel



Notes for Scenario 1

1. The requirements for isolation or quarantine on a vessel include the following:
 - Remain on the vessel. There are some exceptions where crew members can disembark the vessel to undertake essential tasks or for certain specified reasons (see **Scenario 3**). In some cases, disembarkation is permitted if the crew member is being transferred to a managed facility (see **Scenarios 2, 3 and 4**) or departing by air (see **Scenario 5A and 5B**).
 - Crew should minimise contact with other people on the vessel as much as possible. If there is a need to interact/engage closely with other crew members, try to maintain physical distancing to the greatest extent possible.
 - Crew should wear PPE including a surgical mask and gloves if there is a requirement to come into close contact with another person who is not on their vessel. Avoid taking gloved hands or un-gloved hands to eyes, nose or mouth and use a thorough handwashing technique.
 - All crew should complete a daily health check for COVID-19 symptoms, which include looking for the following symptoms: a cough, a high temperature (at least 38°C), shortness of breath, a sore throat, sneezing and a running nose, or temporary loss of smell.
 - All crew should complete a daily temperature check.
 - Before and after wearing gloves, crew should wash, and dry hands using the correct technique or immediately use the antiseptic gel (hand sanitizer) at your work station.
 - When coughing, maintain distance, cover coughs and sneezes with your elbow, disposable tissues or clothing, and wash and dry hands afterwards or use hand sanitizer.

If a crew member does need to interact with others (for example port workers or border control officials), they must maintain physical distancing of at least 2 metres to the greatest extent possible. They must also wear PPE including a surgical mask and gloves.

As well as the requirements listed above, try to take these additional self-isolation steps (noting that it may be difficult for crew members to separate themselves on the vessel):

- If possible, avoid sharing a bed with others or sleeping in a common area.
 - Minimise the time spent in shared spaces on the vessel as much as possible and keep shared spaces clean and well ventilated.
 - Ensure that all surfaces are cleaned with disinfectant. Try to avoid touching them after you have cleaned them. This includes areas like kitchen benches and sink tops.
 - Use separate towels (for after showering and for hand-hygiene), washcloths and bed linen from others on the vessel.
 - Clean any shared toilets and bathrooms each time after they have been used.
 - If possible, try to eat in a separate area from others. Ensure all dishes are washed thoroughly in hot water with suitable detergent.
 - Do not share dishes, drinking glasses, cups or eating utensils. Do not share food and drinks.
 - Do your own laundry where possible. Do not shake dirty laundry.
2. The Order states that a crew member must submit to a medical examination or testing at any time during their required period of isolation or quarantine if requested by a medical officer of health or health protection officer.

3. Crew should follow any direction of the medical officer of health or health protection officer. If the crew member remains in quarantine on the vessel then they must follow procedures to reduce the spread of COVID-19:
 - At all times remain in cabin.
 - Do not have any contact with other crew members on the vessel.
4. A medical officer of health or health protection officer will determine if a crew member is transferred to a quarantine facility or hospital. A **high-risk facility** is a facility designated by a medical officer of health for the purposes of detaining people in a way appropriate for people with a high risk of transmitting COVID-19. A **low-risk facility** is a facility designated by a medical officer of health for the purposes of detaining people in a way appropriate for people with a low risk of transmitting COVID-19. The medical officer of health or health protection officer may decide that the place of isolation/quarantine should be another place if this is necessary due to the physical needs of the person.

The medical officer of health or health protection officer will arrange for the crew member to be booked into an appropriate managed facility. The mechanism to do this is to email covid-19_national_isolation@health.govt.nz.

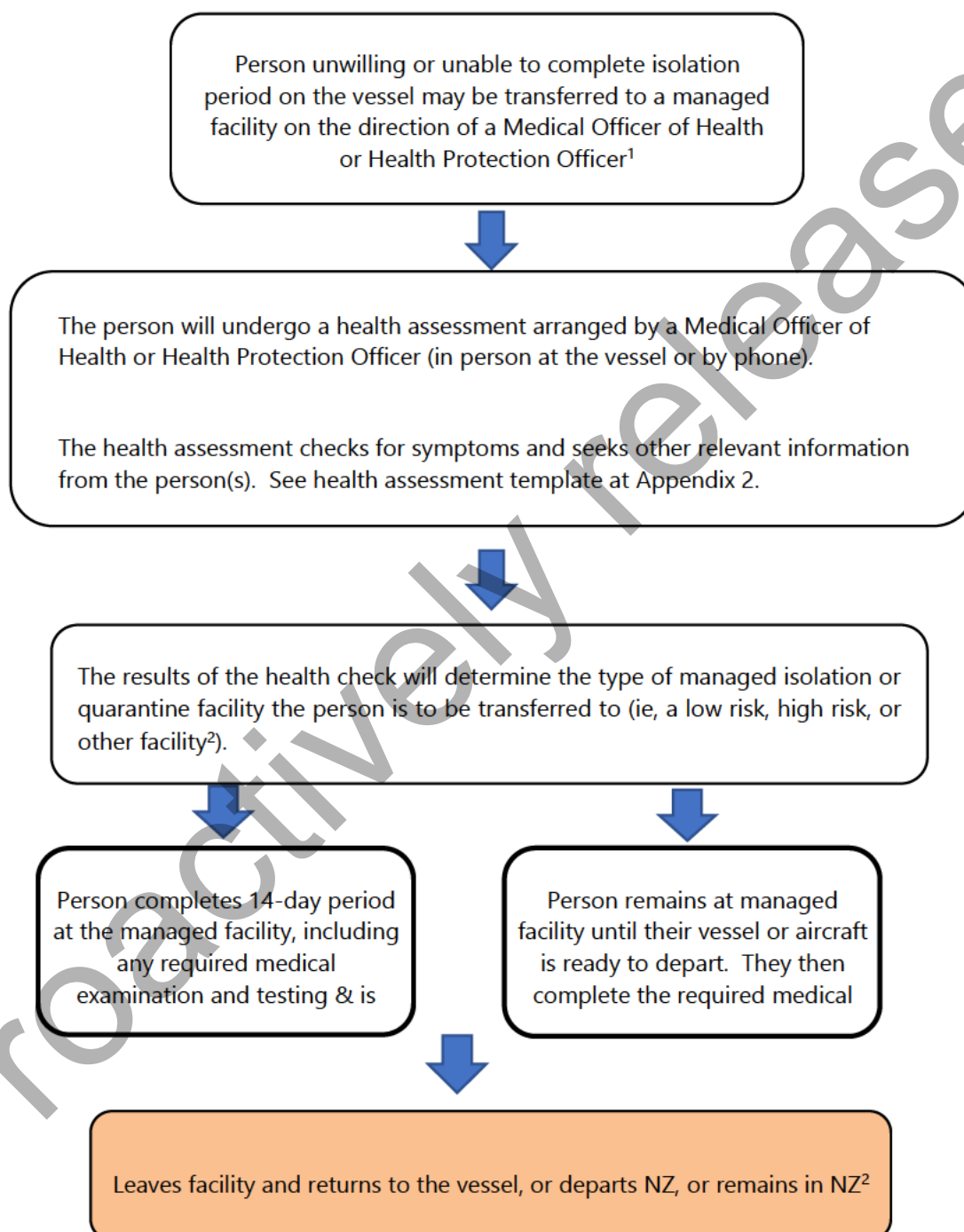
Further guidance on transporting people to minimise the risk of COVID-19 is provided at Appendix 1.

More information on the processes for managed isolation and quarantine facilities is available on the Ministry of Health's website <https://www.health.govt.nz/our-work/diseases-and-conditions/covid-19-novel-coronavirus/covid-19-current-situation/covid-19-border-controls/covid-19-managed-isolation-and-quarantine>

5. To remain in New Zealand the crew member must meet New Zealand immigration requirements. For more information, refer to:
 - Ministry of Health's border control webpage
<https://www.health.govt.nz/our-work/diseases-and-conditions/covid-19-novel-coronavirus/covid-19-current-situation/covid-19-border-controls>.
 - Immigration New Zealand's border control webpage
<https://www.immigration.govt.nz/about-us/covid-19/border-closures-and-exceptions>.

Scenario 2 – Person wants to disembark vessel arrived at a NZ port, and the crew are still under quarantine or isolation because it is:

- **28 days or less since vessel left last overseas port (or encountered other person since leaving last port)**
- **14 days or less since vessel arrived in NZ territorial waters**



Notes for Scenario 2

1. The vessel agent will contact the local DHB public health unit to discuss the details of the transfer. The medical officer of health or health protection officer will arrange for the crew member to be booked into an appropriate managed facility. The mechanism to do this is to email covid-19_national_isolation@health.govt.nz.

The agent is required to provide a plan of private travel for the crew member. The crew member must wear PPE. Further guidance on transporting people to minimise the risk of COVID-19 is provided at Appendix 1.

Contacts for public health units are available here:

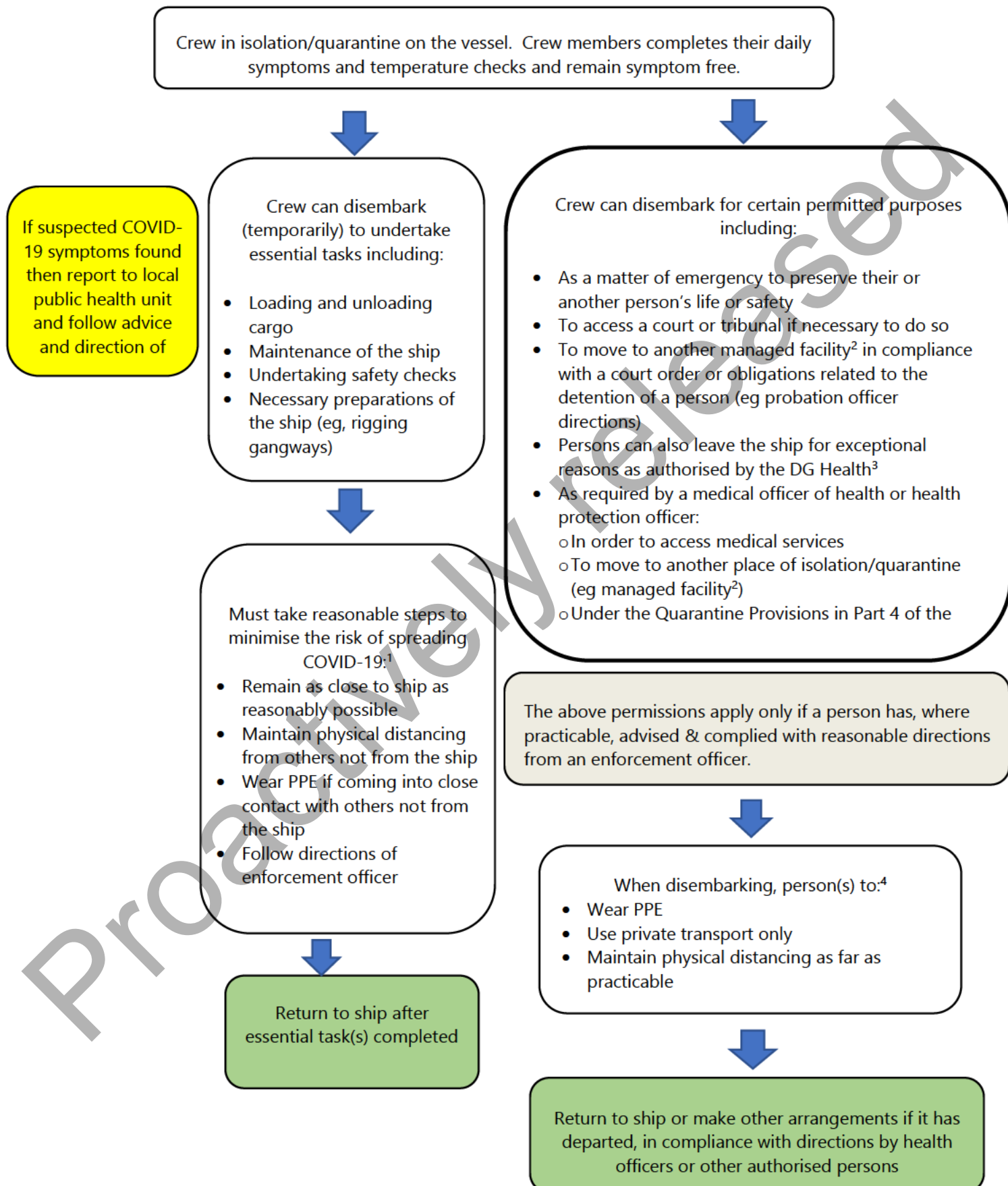
<https://www.health.govt.nz/new-zealand-health-system/key-health-sector-organisations-and-people/public-health-units/public-health-unit-contacts>

2. A **high-risk facility** is a facility designated by a medical officer of health for the purposes of detaining people in a way appropriate for people with a high risk of transmitting COVID-19. A **low risk facility** is a facility designated by a medical officer of health for the purposes of detaining people in a way appropriate for people with a low risk of transmitting COVID-19. The medical officer of health or health protection officer may decide that the place of isolation/quarantine should be another place if this is necessary due to the physical needs of the person.

More information on the processes for managed isolation and quarantine facilities is available on the Ministry of Health's website <https://www.health.govt.nz/our-work/diseases-and-conditions/covid-19-novel-coronavirus/covid-19-current-situation/covid-19-border-controls/covid-19-managed-isolation-and-quarantine>.

3. The isolation/quarantine period of time will depend on circumstances such as how long the person has been at sea since their previous port and/or how long the vessel has been in New Zealand.
4. To remain in New Zealand the crew member must meet New Zealand immigration requirements. For more information, refer to:
 - Ministry of Health's border control webpage
<https://www.health.govt.nz/our-work/diseases-and-conditions/covid-19-novel-coronavirus/covid-19-current-situation/covid-19-border-controls>.
 - Immigration New Zealand's border control webpage
<https://www.immigration.govt.nz/about-us/covid-19/border-closures-and-exceptions>.

Scenario 3 – Person wants to disembark a vessel arrived at NZ to undertake essential tasks, or for other reasons, covered by the Order



Notes for Scenario 3

1. Key steps to minimise the risk of spreading COVID-19 include:
 - Crew must complete essential tasks as close as reasonably possible to the ship. Crew must not venture any further than necessary for the task and should limit interaction with other people.
 - If crew must interact with others (for example, port workers or border control officials), maintain physical distancing to the greatest extent possible, ideally not within 2 metres.
 - Crew should wear PPE - a surgical/medical mask and gloves, if there is a requirement to come into close contact with another person. Crew should avoid taking gloved hands or un-gloved hands to their eyes, nose, or mouth and use a thorough handwashing technique.
 - Before and after wearing gloves, crew should wash, and dry hands using the correct technique or immediately use the antiseptic gel (hand sanitizer)
 - When coughing, maintain distance, cover coughs and sneezes with your elbow, disposable tissues or clothing, and wash and dry hands afterwards or use hand sanitizer.
 - Follow any directions of an enforcement officer - appointed under the COVID-19 Public Health Response Act 2020. Such directions may include directions from a medical officer of health, a constable, or another person authorised to under this Act.

2. The medical officer of health or health protection officer will arrange for the crew member to be booked into an appropriate managed facility. The mechanism to do this is to email covid-19_national_isolation@health.govt.nz. Further guidance on transporting people to minimise the risk of COVID-19 is provided at Appendix 1.

More information on the processes for managed isolation and quarantine facilities is available on the Ministry of Health's website:

<https://www.health.govt.nz/our-work/diseases-and-conditions/covid-19-novel-coronavirus/covid-19-current-situation/covid-19-border-controls/covid-19-managed-isolation-and-quarantine>

3. To disembark a vessel for exceptional reasons as approved by the Director-General of Health, the following process would apply. The ship's agent would need to clearly set out proposed reasons in writing. This should:
 - Describe any impacts that leaving the ship might have on the risk of an outbreak or spread of COVID-19 and how these will be managed
 - Explain how the person meets the low risk indicators – (a) the person submits to a medical test for COVID-19 and the result of that test is negative; and (b) any other medical tests or information that indicate the person is at low risk of having or transmitting COVID-19).⁵
 - Outline the measures that will be taken to ensure compliance with the authorisation, if granted.

In the first instance the ship agent should provide this information to the local public health unit. The public health unit will review the application and may seek further information (unless it is an emergency which requires immediate disembarkation). The public health unit would then make a recommendation for the Director-General to consider, if applicable. The Director-General would then decide whether to grant or decline the request.

⁵ Note: (a) does not apply if a person has particular physical or other needs that a medical officer of health or health protection officer determines would make it inappropriate for the person to undertake the medical test.

Contacts for public health units are available here:

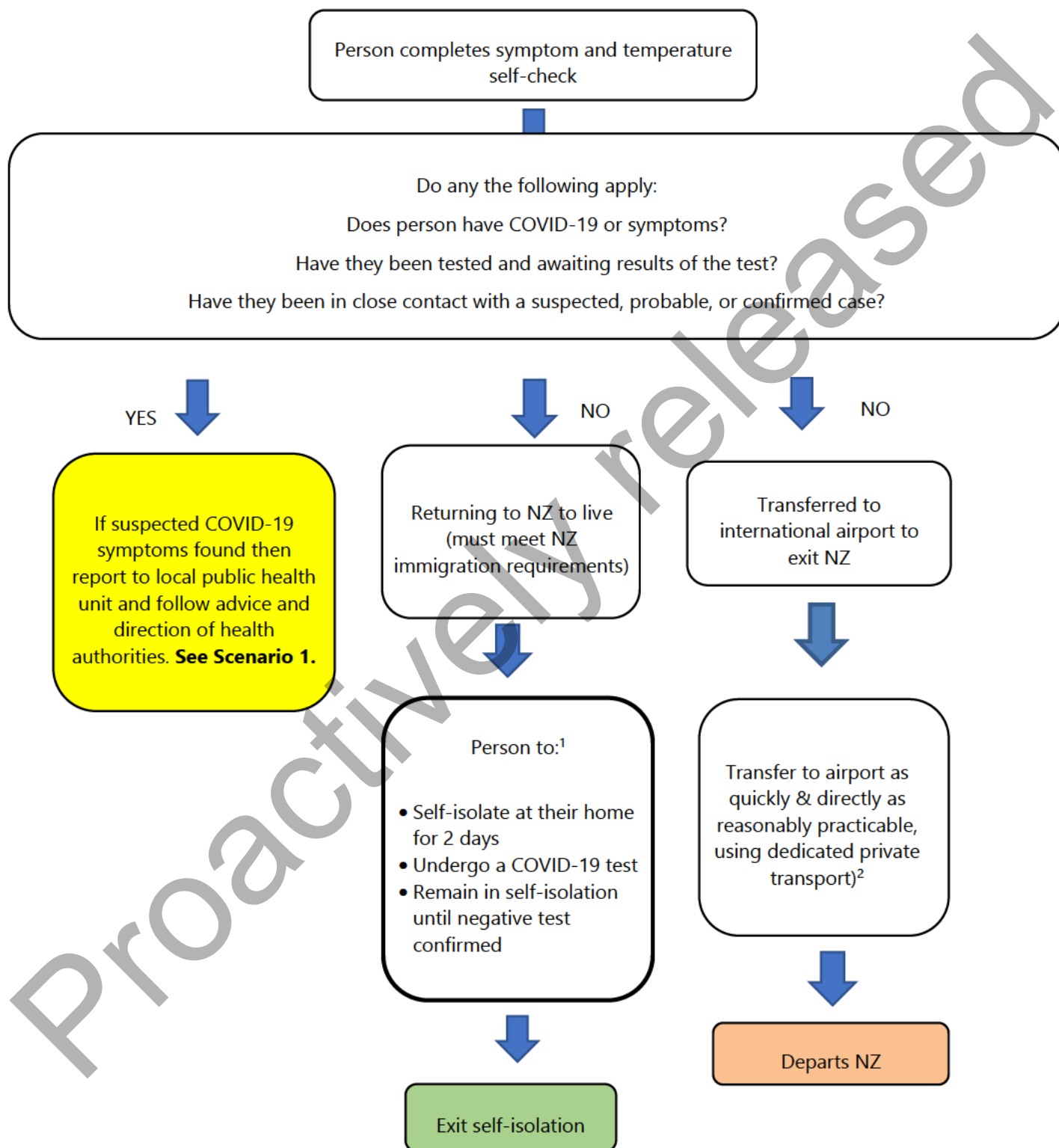
<https://www.health.govt.nz/new-zealand-health-system/key-health-sector-organisations-and-people/public-health-units/public-health-unit-contacts>

4. Refer above for guidance on PPE and physical distancing. Further guidance on transporting people to minimise the risk of COVID-19 is provided at Appendix 1.

Proactively released

Scenario 4 – Person wants to disembark a vessel arrived in NZ

- **More than 28 days** since vessel left its last overseas port (or encountered other person since leaving last port)
- **More than 14 days** since vessel arrived



Notes for Scenario 4

1. In the first instance, voluntary compliance for such isolation and testing steps should be sought for crew wanting to return into the NZ community (for example, citizens wanting to go return to their homes after finishing working on a vessel).

However, if the person will not voluntarily comply then the medical officer of health should contact the Ministry of Health with a view to arranging an order under section 70 of the Health Act 1956 to be produced to support compliance with this procedure. Such section 70 Orders will be required for individuals who do not voluntarily comply (or individuals as long as they can be named and individually identified). The Ministry will draft an order and provide it to the medical officer of health.

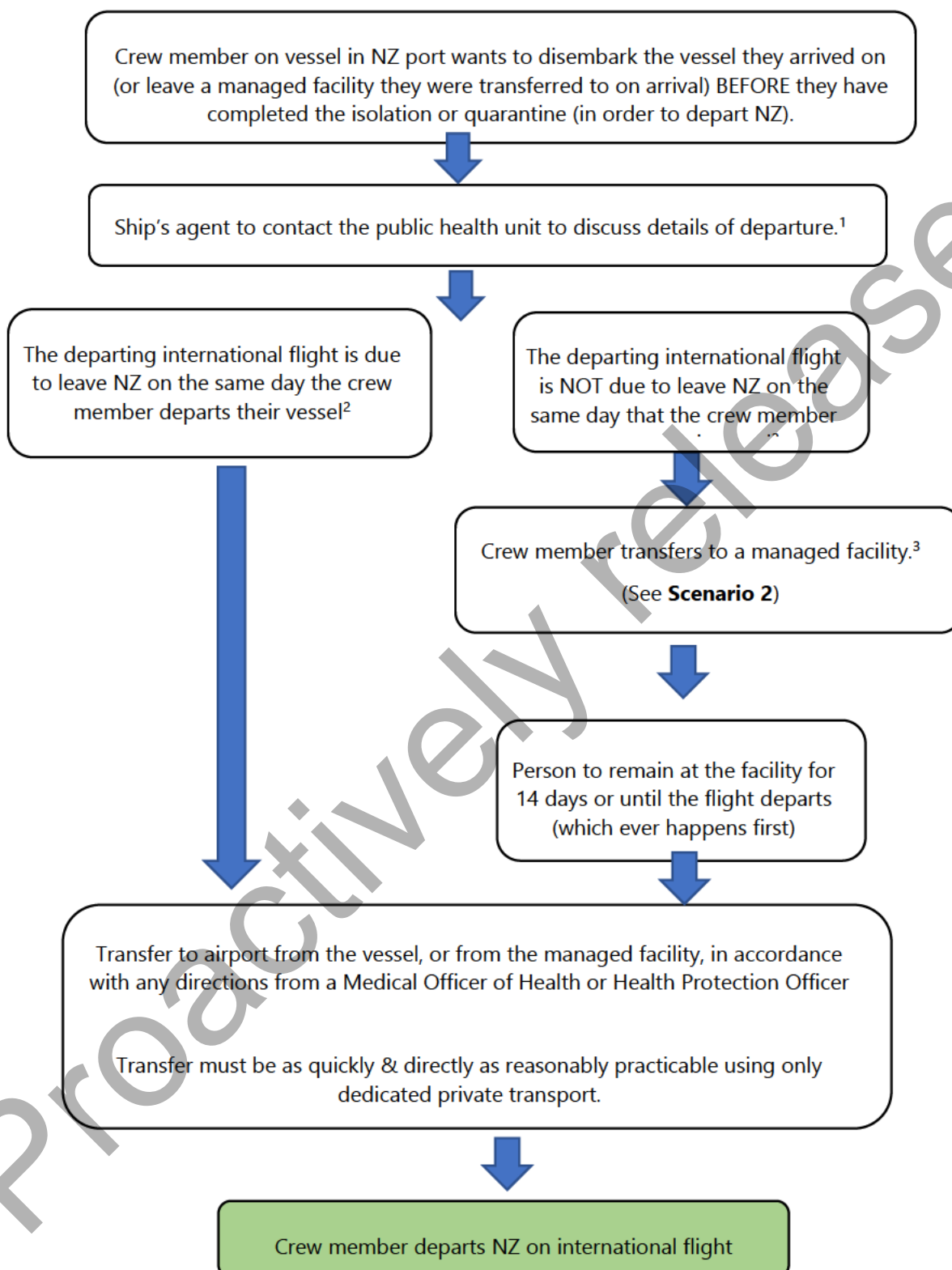
Further guidance on transport people to minimise the risk of COVID-19 is provided at Appendix 1.

More information on the processes for self-isolation is available on the Ministry of Health's website:

<https://www.health.govt.nz/our-work/diseases-and-conditions/covid-19-novel-coronavirus/covid-19-health-advice-general-public/covid-19-self-isolation-close-contacts-and-travellers>

2. The ship agent will generally be responsible for organising transport to an international airport. Further guidance on transporting people to minimise the risk of COVID-19 is provided in Appendix 1.

Scenario 5A - Vessel crew wanting to depart New Zealand by air prior to completing isolation requirements (see also Scenario 5B, below)



Notes for Scenario 5A

1. The vessel's agent needs to contact the local DHB public health unit to discuss the how to safely manage the crew member's departure by air in a way that minimises public health risks. Such measures are to include:
 - Using private transport only travelling as quickly and directly to the international airport as reasonably practicable. For example, the transfer could occur via the agent using their car or hiring a vehicle. Further guidance on transporting people to minimise the risk of COVID-19 is provided at Appendix 1.
 - There being less than five hours road travel to the airport of international departure
 - Physical distancing should be maintained in the vehicle (at least one metre) if someone who has not been on the vessel is in the vehicle
 - The crew member and driver to wear PPE, including a surgical mask and gloves
 - The vehicle needs to be sanitised once the transfer has been completed.

Contacts for public health units are available here:

<https://www.health.govt.nz/new-zealand-health-system/key-health-sector-organisations-and-people/public-health-units/public-health-unit-contacts>

2. In most cases, the transfer should be organised so that the crew member departs the vessel on the same day as their flight is departing New Zealand. This will require close communication between shipping agents and public health units. In some cases, there may be a valid reason for the crew member to depart the vessel on a day before their scheduled flight. For example, the vessel may be sailing to another port in New Zealand or departing New Zealand, so the crew members needs to disembark sooner. In such cases, the number of days between departure from the vessel and arrival at the international airport should be kept to a minimum as possible.

In such cases the medical officer of health or health protection officer will need to arrange the transfer of a crew member to a managed facility. Further guidance on transporting people to minimise the risk of COVID-19 is provided at Appendix 1.

3. The medical officer of health or health protection officer will arrange for the crew member to be booked into an appropriate managed facility. The mechanism to do this is to email covid-19_national_isolation@health.govt.nz. Further guidance on transporting people to minimise the risk of COVID-19 is provided at Appendix 1.

More information on the processes for managed isolation and quarantine facilities is available on the Ministry of Health's website:

<https://www.health.govt.nz/our-work/diseases-and-conditions/covid-19-novel-coronavirus/covid-19-current-situation/covid-19-border-controls/covid-19-managed-isolation-and-quarantine>

Scenario 5B – Process to support maritime crew disembarking a vessel in New Zealand (see also Scenario 5A)

Shipping agents' responsibilities include:

- Confirming visa status for crew is valid for NZ, transit countries, and country of destination
- Arranging dedicated private transport from vessel to an international airport or managed facility if applicable (see also **Scenario 5A** and **Appendix 1**), including ongoing communication with the private transport provider
- Notifying port company and DHB Public Health Unit (PHU) of intention to facilitate crew change
- Oversight of crew until the vessel departs (eg, if crew flights are delayed they may need to return to the vessel)

Shipping agent notified of crew change (e.g. by shipping line/manning co.). Advance Notice of Arrival (ANoA) form must be submitted to NZ Customs Service and Border Health Protection Officer (in DHB PHU¹), and

Border Health Officer to assess ANoA to check if any crew intend to depart the vessel²

Crew intend to depart

Border Health Officer to contact vessel master / shipping agent to:³

- Confirm receipt of ANoA and that crew intend to depart the vessel
- Advise agent on the Maritime Order's new requirements if necessary
- Confirm the date when the 14-day quarantine/self-isolation period will be completed for persons staying on the vessel
- Collect information on:
 - Crew disembarking (names and number of crew) and why they need to disembark

No change in health status notice submitted 12-24 hours before arrival. Will update the Health Officer if any

(If vessel will visit other NZ ports) Health Officer at port of arrival to liaise with the Health Officers at any subsequent NZ ports to confirm the end date of the quarantine/self-isolation period and when and where crew intend to depart NZ

Shipping agent facilitates crew transfer via dedicated private transport. Health Officer to provide supporting advice if needed on transport to airport (see also **Scenario 5A, supporting notes, and Appendix 1**).

No crew intend to depart

Border Health Officer to contact vessel master/shipping agent to:³

- Confirm receipt of ANoA and that no crew intend to depart the vessel
- Advise agent on the Maritime Order's new quarantine/isolation requirements if necessary
- Confirm the date when the 14-day quarantine/self-isolation period will be completed

No change in health status notice submitted 12-24 hours before arrival.

Health Officer at port of arrival to liaise with the Health Officers at any subsequent NZ ports to confirm the end date of the quarantine/self-isolation period

Crew members self-isolate on vessel while waiting for it to depart (there are some exceptions, e.g. see **Scenario 3**)

Notes for Scenario 5B

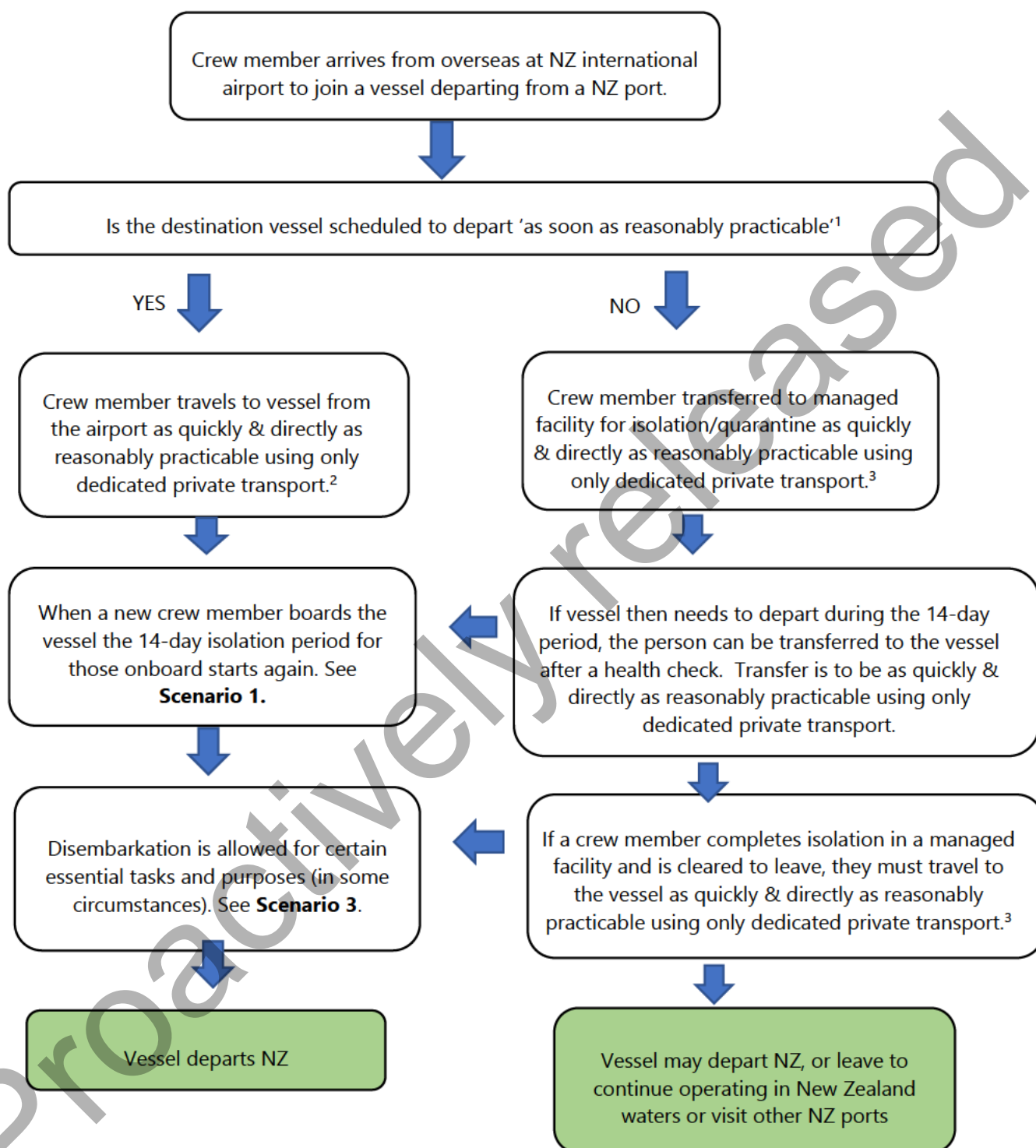
1. Contacts for public health units are available here:
<https://www.health.govt.nz/new-zealand-health-system/key-health-sector-organisations-and-people/public-health-units/public-health-unit-contacts>
2. Reasons for departure include crew travelling to an international airport to depart New Zealand as part of a crew change (see **scenario 5A**), crew leaving for other purposes under the order (see **scenario 3**). This is a new function for Public Health Units (PHUs) in light of the new Maritime Border Order.
3. Key information PHUs will need to communicate to ship agents / vessels about the new Order includes:
 - a. Foreign flagged vessels are prohibited from entering New Zealand, unless they are exempted by the Order
 - b. There are strict isolation or quarantine requirements for all those arriving at the maritime border
 - c. Persons wanting to disembark the vessel must remain in quarantine or isolation on the vessel for at least 14 days after arrival in New Zealand waters. There some exceptions under the Order as outlined in Ministry of Health Guidance: *Quarantine/isolation process at the maritime border*

The PHU's role is to support the ship's agent to manage crew changes while ensuring that public health is protected. If crew are intending to disembark to fly out of New Zealand, it is important that PHUs are aware of intended crew movements, able to provide public health advice to ship agents, and notify other PHUs around New Zealand if the vessel it to sail on to other NZ ports. Other PHUs will need to know:

- The status of the 14-day quarantine/self-isolation period as the vessel moves to other ports
- When and where intended crew changes are to occur at ports in their area.

PHUs should also liaise closely with local Customs Officers regarding crew changes on vessels to ensure both agencies are aware of what is happening regarding crew movements.

Scenario 6 – Crew arriving by air wanting to join a vessel



Notes for Scenario 6

1. Whether the vessel is due to depart 'as soon as reasonably practicable' will depend on the situation. Generally, this would be within 48 hours of the crew member's arrival. However, in some circumstances, it may be longer – for example, this may include the vessel departure being delayed due to weather issues, or because of port activities that delay the vessel. If it is likely to be more than 48 hours before the vessel departs, the agent should contact the public health unit to discuss the option of the crew member being transferred to a managed facility.

Contacts for public health units are available here:

<https://www.health.govt.nz/new-zealand-health-system/key-health-sector-organisations-and-people/public-health-units/public-health-unit-contacts>

2. The vessel's agent needs to contact the local DHB public health unit to discuss how to safely manage the crew member's journey from their airport to the vessel in a way that minimises public health risks. Such measures are to include:
 - Using private transport only travelling as quickly and directly to the vessel as reasonably practicable. For example, the transfer could occur via the agent using their car or hiring a private vehicle. The transfer must not be via public transport services. Further guidance on transporting people to minimise the risk of COVID-19 is provided at Appendix 1.
 - Physical distancing should be maintained in the vehicle (at least one metre)
 - The crew member and driver to wear PPE, including a surgical mask and gloves
 - The vehicle needs to be sanitised once the transfer has been completed.
3. The medical officer of health or health protection officer will arrange for the crew member to be booked into an appropriate managed facility. The mechanism to do this is to email covid-19_national_isolation@health.govt.nz.

The vessel's agent needs to contact the local DHB public health unit to discuss how to manage the crew member's journey from the airport to the managed facility (and subsequent travel from the managed facility to the vessel). Such travel measures will include those notes above in 2.

More information on the processes for managed isolation and quarantine facilities is available on the Ministry of Health's website:

<https://www.health.govt.nz/our-work/diseases-and-conditions/covid-19-novel-coronavirus/covid-19-current-situation/covid-19-border-controls/covid-19-managed-isolation-and-quarantine>

Appendix 1.1: Transporting people in the quarantine and isolation context

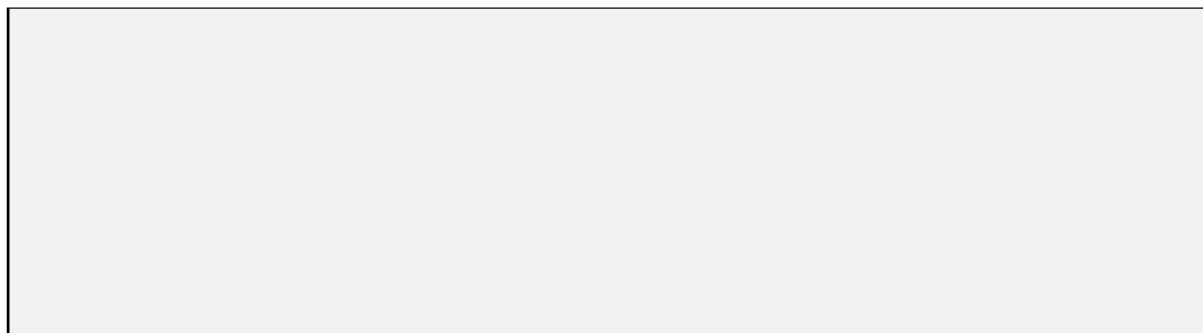
Transporting passengers must be only by using dedicated private transport. Appropriate processes will generally include:

- Both the driver and passenger should wear PPE - a surgical mask and gloves.
- If possible, use a vehicle that allows for physical distancing of 2 metres as much as practicable during the transport (including before and after being in the vehicle) – for example, a minivan. Use a vehicle that allows for 2 metres between the driver and the passengers. Crew members of the vessel who are self-isolating may sit together. Where practical, keep two rows free of passengers behind the driver.
- If in a smaller private vehicle, for example a car, the crew member should sit diagonally behind the driver to maximise physical distancing.
- Hand hygiene is to be performed before and after wearing gloves and entering the vehicle. Wash and dry hands using the correct technique or immediately use the antiseptic gel (hand sanitizer).
- Hand hygiene is required after handling luggage, but passengers should load their own luggage where possible.
- When coughing, maintain distance, cover coughs and sneezes with your elbow, disposable tissues or clothing, and wash and dry hands afterwards or use hand sanitizer.
- The vehicle should contain hand sanitizer containing at least 60 percent alcohol and hospital grade disinfectant surface wipes. It should also contain a container or bag to dispose of PPE if this is not provided at the point of exit.
- Ventilate the vehicle to the outside where possible (open windows if practical, don't use ventilation on the recycle setting)
- During the journey, the driver and passenger should not go to supermarkets, shops, petrol stations or similar services over this time.
- Comply with all relevant Ministry of Health COVID-19 guidelines: <https://www.health.govt.nz/our-work/diseases-and-conditions/covid-19-novel-coronavirus/covid-19-information-specific-audiences>
- Where practicable, organise an entry and exit zone that excludes the general public from exposure to passengers.
- Clean the vehicle as soon as possible after use. Cleaners should wear a mask and gloves. They should wipe all flat surfaces and touched surfaces with hospital grade detergent/disinfectant. Cleaning wipes should be disposed of in an appropriate manner.
- High risk transport where a crew member may be symptomatic will be at the direction and advise of the medical officer of health or health protection officer.

Appendix 2 - Health Assessment Tool for Maritime Border Arrivals (for Public health Unit use)
Date of assessment:
Assessor:

Name:			
Mobile & Email:			
Date of birth:			
Passport No:			
Vessel / Flight details			
Date arrived in NZ			
Date left last overseas port			
Countries visited in the 28 days prior to arrival			
Residency:	<input type="radio"/> NZ or other (please write)		
Clinical assessment			
Standard Questions	Date of symptom onset:		
	Cough?	YES	NO
	Difficulty breathing / Shortness of breath?	YES	NO
	Chills / Fever	YES	NO
	Sore throat	YES	NO
	Muscle aches	YES	NO
	Coryza symptoms – head cold e.g. runny nose, sneezing, post-nasal drip	YES	NO

	Anosmia – loss of sense of smell	YES	NO
	Have you had contact with a suspected or confirmed case of COVID-19 in the last 28 days? If yes, when was this?	YES	NO
	Have you previously had a test for COVID-19? If yes, when was this and what was the result?	YES	NO
	Temperature check		
	Other comorbid conditions (List)	YES	NO
Outcome	Surgical Mask given	YES	NO
	Written information given	YES	NO
	Health line information given	YES	NO
	Swab taken	YES	NO
	Self-isolation/quarantine advice given	YES	NO
	Passenger requiring hospitalisation? Refer to assessment document if needed	YES	NO
Notes			



Please note – from updated COVID-19 case definitions

24 JUNE 2020

We have introduced “Higher Index of Suspicion” (HIS) criteria as, at this stage, our greatest risk of re-introduction of COVID-19 and spread is via our border. All people meeting the HIS criteria who have symptoms consistent with COVID-19 should be tested for COVID-19 and self-isolate while awaiting test results to reduce the risk to others. People who have worked on an international aircraft or shipping vessel, had international travel, or cleaned at an international airport or maritime port in areas/conveniences visited by international arrivals meet the HIS criteria.

Appendix 1.3: Further information and resources

The COVID-19 webpages are updated daily. You can find more information [here](#).
<https://www.health.govt.nz/our-work/diseases-and-conditions/covid-19-novel-coronavirus>

Advice for airline crew [here](#).
<https://www.health.govt.nz/our-work/diseases-and-conditions/covid-19-novel-coronavirus/covid-19-information-specific-audiences/covid-19-resources-border-sector>

Advice on cleaning [here](#).
<https://www.health.govt.nz/our-work/diseases-and-conditions/covid-19-novel-coronavirus/covid-19-information-specific-audiences/covid-19-general-cleaning-and-disinfection-advice/cleaning-following-confirmed-or-probable-case-covid-19>

Advice on personal protective measures [here](#).
<https://www.health.govt.nz/our-work/diseases-and-conditions/covid-19-novel-coronavirus/covid-19-information-specific-audiences/covid-19-personal-protective-equipment-workers/personal-protective-equipment-use-non-health-workers>

Advice for travellers [here](#).
<https://www.health.govt.nz/our-work/diseases-and-conditions/covid-19-novel-coronavirus/covid-19-information-specific-audiences/covid-19-advice-travellers>

Advice on self-isolation [here](#).
<https://www.health.govt.nz/our-work/diseases-and-conditions/covid-19-novel-coronavirus/covid-19-health-advice-general-public/covid-19-self-isolation-close-contacts-and-travellers>

Advice on caring for yourself and others who have, or may have, COVID-19 at home [here](#).
<https://www.health.govt.nz/our-work/diseases-and-conditions/covid-19-novel-coronavirus/covid-19-health-advice-general-public/caring-yourself-and-others-who-have-or-may-have-covid-19-home>

All of Government Factsheet for Welfare Support: information on what welfare support is available for people who may be self-isolating or are not sure what assistance may be is available
<https://www.health.govt.nz/our-work/diseases-and-conditions/covid-19-novel-coronavirus/covid-19-novel-coronavirus-resources-and-tools> [here](#) or phone the 0800 Government Helpline on 0800 779 997 (9am–5pm, seven days/week). For health specific questions, please call Healthline directly on 0800 611 116 (24 hours/day, seven days/week).

Border advisories [here](#).
<https://www.health.govt.nz/our-work/diseases-and-conditions/covid-19-novel-coronavirus/covid-19-information-specific-audiences/covid-19-resources-border-sector>

Border controls [here](#).
<https://www.health.govt.nz/our-work/diseases-and-conditions/covid-19-novel-coronavirus/covid-19-current-situation/covid-19-border-controls>

Contact details for District Health Board public health units [here](#).
<https://www.health.govt.nz/new-zealand-health-system/key-health-sector-organisations-and-people/public-health-units/public-health-unit-contacts>

Current case definition [here](#).

<https://www.health.govt.nz/our-work/diseases-and-conditions/covid-19-novel-coronavirus/covid-19-resources-health-professionals/case-definition-covid-19-infection>

Factsheets for close contacts with a confirmed case, close contacts of a suspected case and people who have been on an aircraft with an unwell person [here](#).

<https://www.health.govt.nz/our-work/diseases-and-conditions/covid-19-novel-coronavirus/covid-19-health-advice-general-public/contact-tracing-covid-19>

General information about COVID-19 [here](#).

<https://www.health.govt.nz/our-work/diseases-and-conditions/covid-19-novel-coronavirus/covid-19-health-advice-general-public/about-covid-19>

Immigration requirements and border exceptions [here](#).

<https://www.immigration.govt.nz/about-us/covid-19/border-closures-and-exceptions>

Information for the border sector [here](#).

<https://www.health.govt.nz/our-work/diseases-and-conditions/covid-19-novel-coronavirus/covid-19-information-specific-audiences/covid-19-resources-border-sector>

Public events and mass gatherings [here](#).

<https://www.health.govt.nz/our-work/diseases-and-conditions/covid-19-novel-coronavirus/covid-19-information-specific-audiences/covid-19-gatherings>

Requesting an exception to enable essential workers to enter New Zealand [here](#).

<https://www.immigration.govt.nz/about-us/covid-19/border-closures-and-exceptions>

World Health Organization situation updates [here](#).

<https://www.who.int/csr/don/en/>

World Health Organization guidance: Operational considerations for managing COVID-19 cases/outbreak on board ships [here](#).

<https://www.who.int/publications/i/item/operational-considerations-for-managing-covid-19-cases-outbreak-on-board-ships>